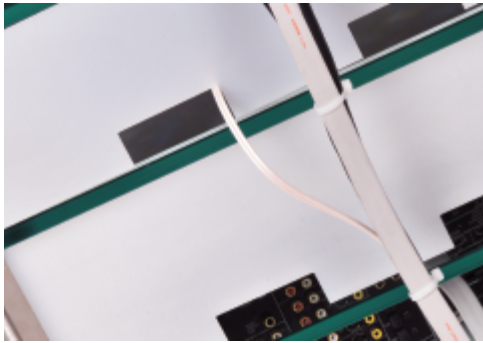


Thank you for purchasing **Cable Management** from Futureglass!



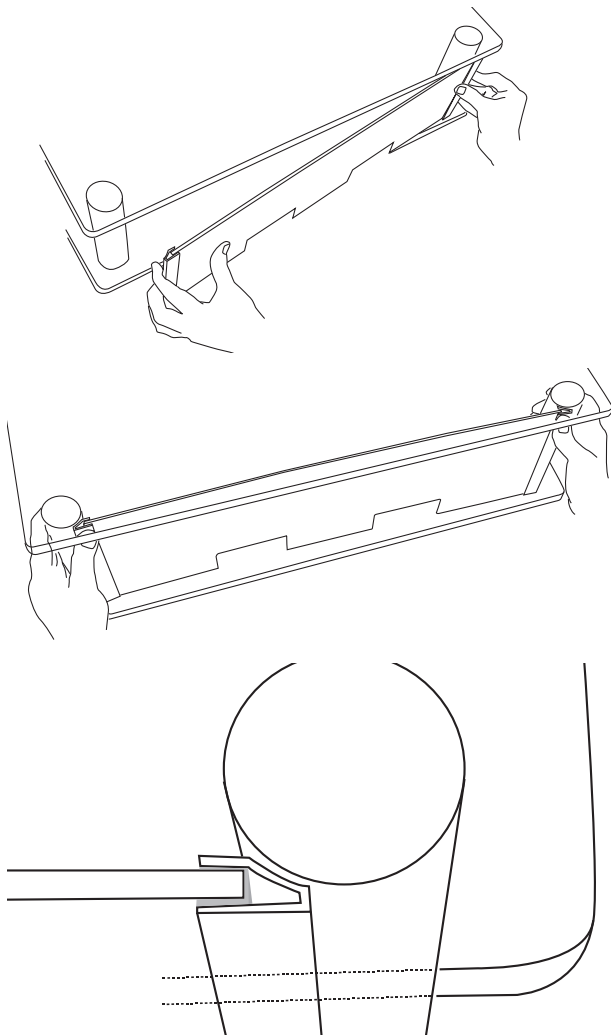
This product is designed to provide a marked aesthetic improvement to one of the most attractive audiophile supports on the market.

The unit has been designed to offer years of enjoyment, providing these simple guidelines are followed.

The simple tool free assembly means that the unit can be applied in the shortest of times.

ASSEMBLY INSTRUCTIONS

1. Ensure that legs to be fitted to are clean.
2. If you have selected the black version, then select the side you would like facing forward, frosted or glossy. The white is frosted on both sides.
3. Push the extrusion so that it fits over the rubber on the end of the panel.
4. Now position the panel over the back of the unit **WITHOUT** taking the backing from the tape on the back of the aluminium. This gives you the chance to make sure that the cables are not obstructing the fitment of the panel. When you are confident that everything is aligned, please remove the backing from the adhesive tape, and place in position. Apply firm pressure to the back of the extrusion to secure the panel.
5. Should you wish to remove the panel, then please slide the acrylic to one side so it is deep in the extrusion, and then gently flex the panel from the centre of the acrylic, to allow it to pop out of one side.
6. To refit, place the rubber extrusion onto the end of the backing plate, and slide in to the extrusion. A small amount of lubricant here will make the task easier.



The glass supplied is toughened to BS6206A for safety. In order to maximize this safety; please follow the following precautions.

1. Take care that your fingers do not get trapped when flexing the panel.
2. Take care not to trap cables between the glass and acrylic.
3. Contact Futureglass if you require assistance or have any comments.